

# Canada IRG Contributions

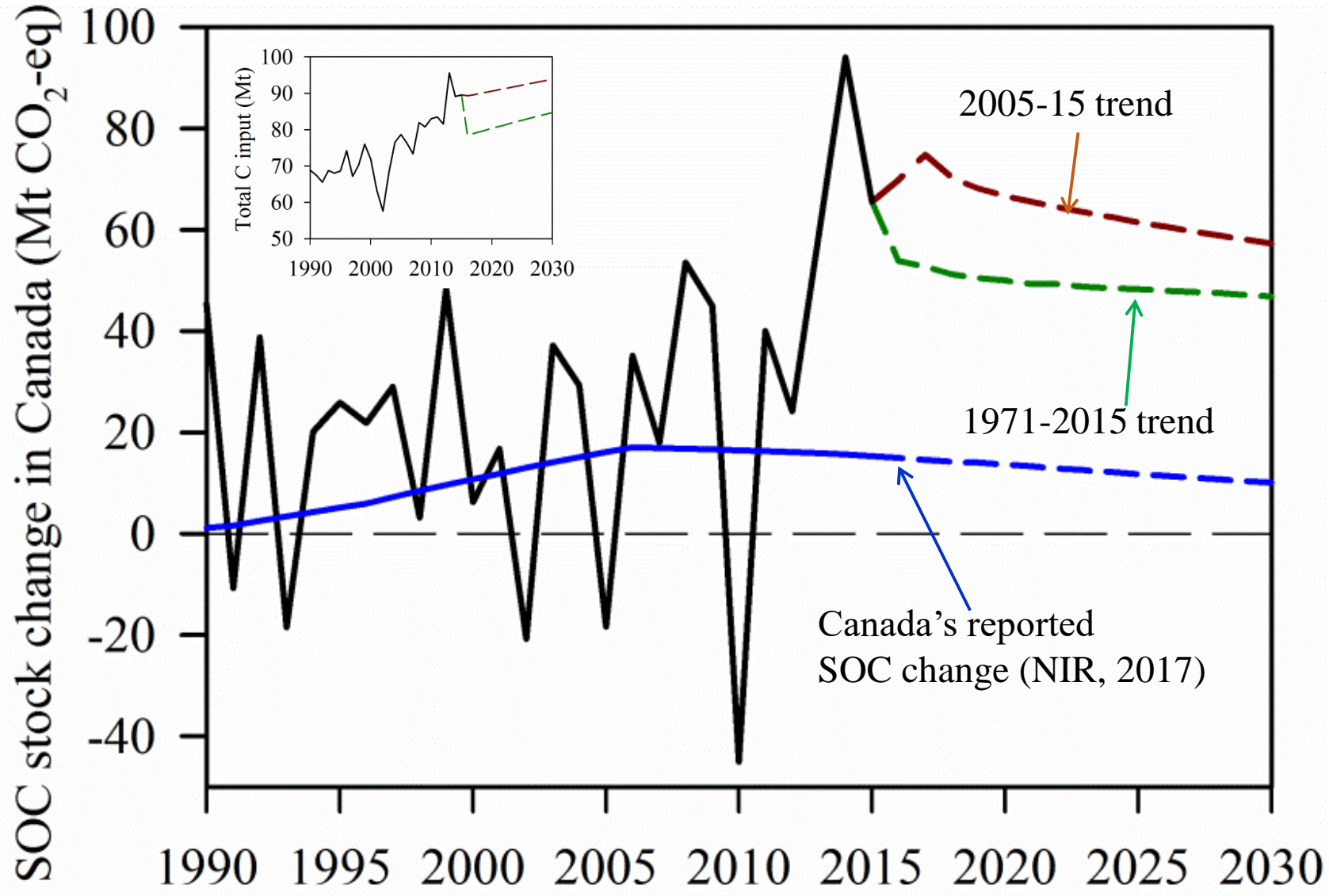
- Well involved
  - Leadership:
    - *Brian McConkey, Group co-chair*
    - *Denis Angers, Carbon Sequestration Network Co-lead*
  - Participation:
    - *Ward Smith, Field modelling*
    - *Roland Kroebel, Farm to Region (F2R) Modelling*

# Canada Funding

- No dedicated funding program for international collaboration
  - International collaboration within domestic Agriculture and Agri-Food Canada projects encouraged
- Has provided incremental funding for Canadian involvement to GRA projects in past
  - Support participation in FACCE JPI model intercomparison project involving Field Monitoring Network (then C&N Modelling Cross Cutting Group)
- New opportunity to apply for modest (<US\$20 k) funds to link existing project to the GRA or other international initiative
  - Flexible
  - Roland Kroebel has used this mechanism to support the 2018 F2R meeting Jan 16-17, 2018

# Canada NDC

- 30% reduction of GHG emissions from 2005 by 2030
- Pan-Canadian Framework Plan
  - Carbon price
  - Mechanism determine provincially
    - Mixture of cap and trade, straight carbon tax, and convoluted carbon taxes (include GHG intensity adjustments)
  - Reductions in energy, industry, transportation sectors dominate
  - Agriculture not important part of plan
    - Estimated peak soil sink on agricultural lands of 13 Mt CO<sub>2</sub> eq reached in 2006
    - Biofuel from agriculturally derived feedstock is largest effective contribution from agriculture



- Unclear of how emission reductions needed to reach NDC target will be obtained
  - Opportunities for reporting larger sink from increased C input to agricultural land
  - 40% increase since 2005 due to increasing crop yields, reduction in bare fallow, and change to crops with higher C inputs (especially canola)
    - Requires Tier 3 process modelling
  - Grassland soil C is “not estimated”
  - Increased reductions to N<sub>2</sub>O and CH<sub>4</sub> emissions?
  - Looking to GRA to assist with identification and adoption of beneficial management practices that will accomplish reduce agricultural emissions
    - International acceptance of reporting in National Inventory is essential