

Brazilian 3rd National Inventory

Alexandre Berndt
April 11, 2017



Process:

- ▶ UNFCCC “hires” Ministry of Science and Technology;
- ▶ MST “hires” 5 Institutions:
 - ▶ Waste management;
 - ▶ Industrial processes;
 - ▶ Energy;
 - ▶ LULUCF;
 - ▶ Agriculture;
- ▶ Project budget mainly on scholarships;

MCTI- National Inventories and Estimative:



(MCT, 2006)



(MCT, 2010)



(MCTI, 2013)



(MCTI, 2014)



(MCTI, 2016)

Brazilian emissions

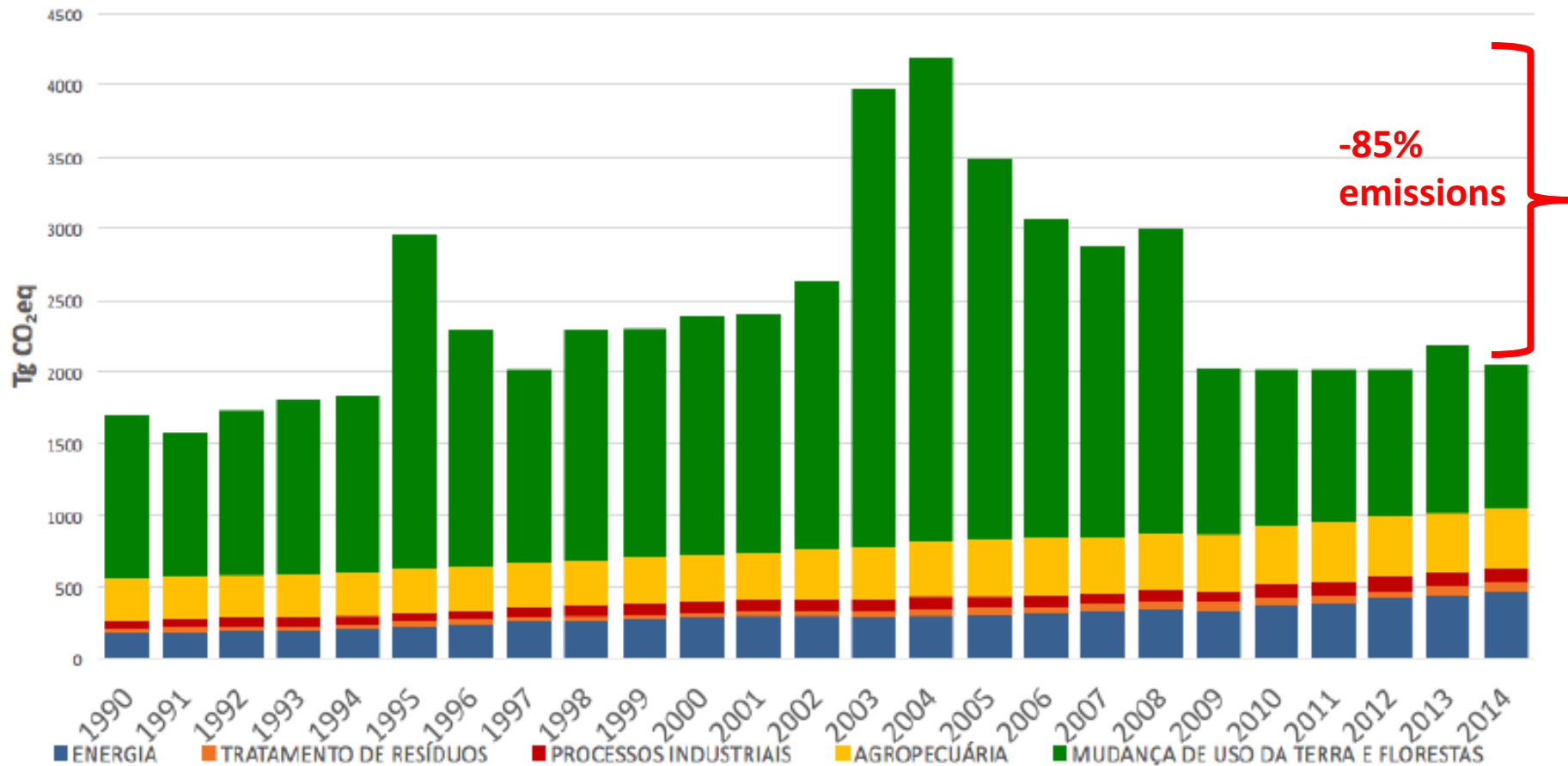
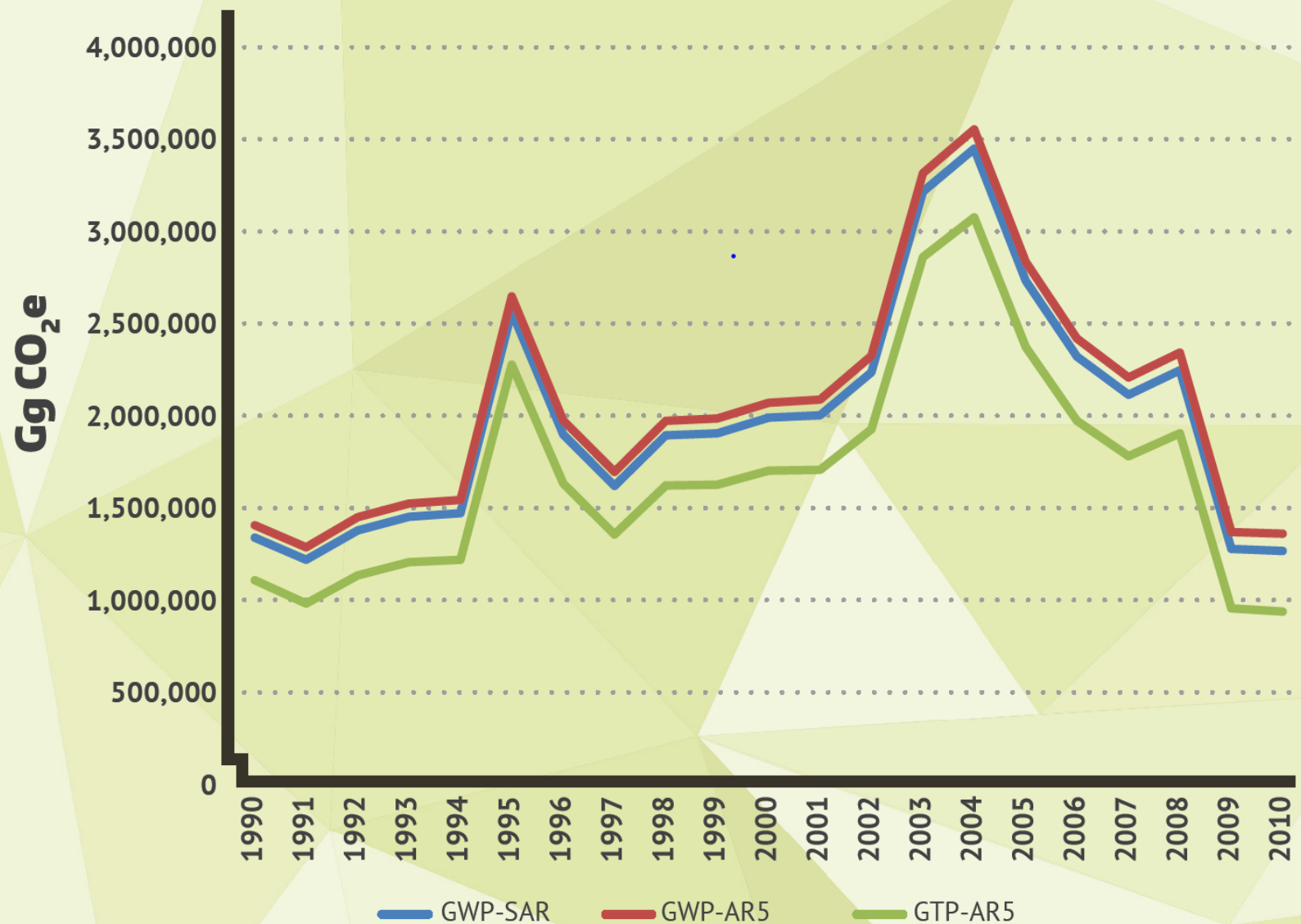


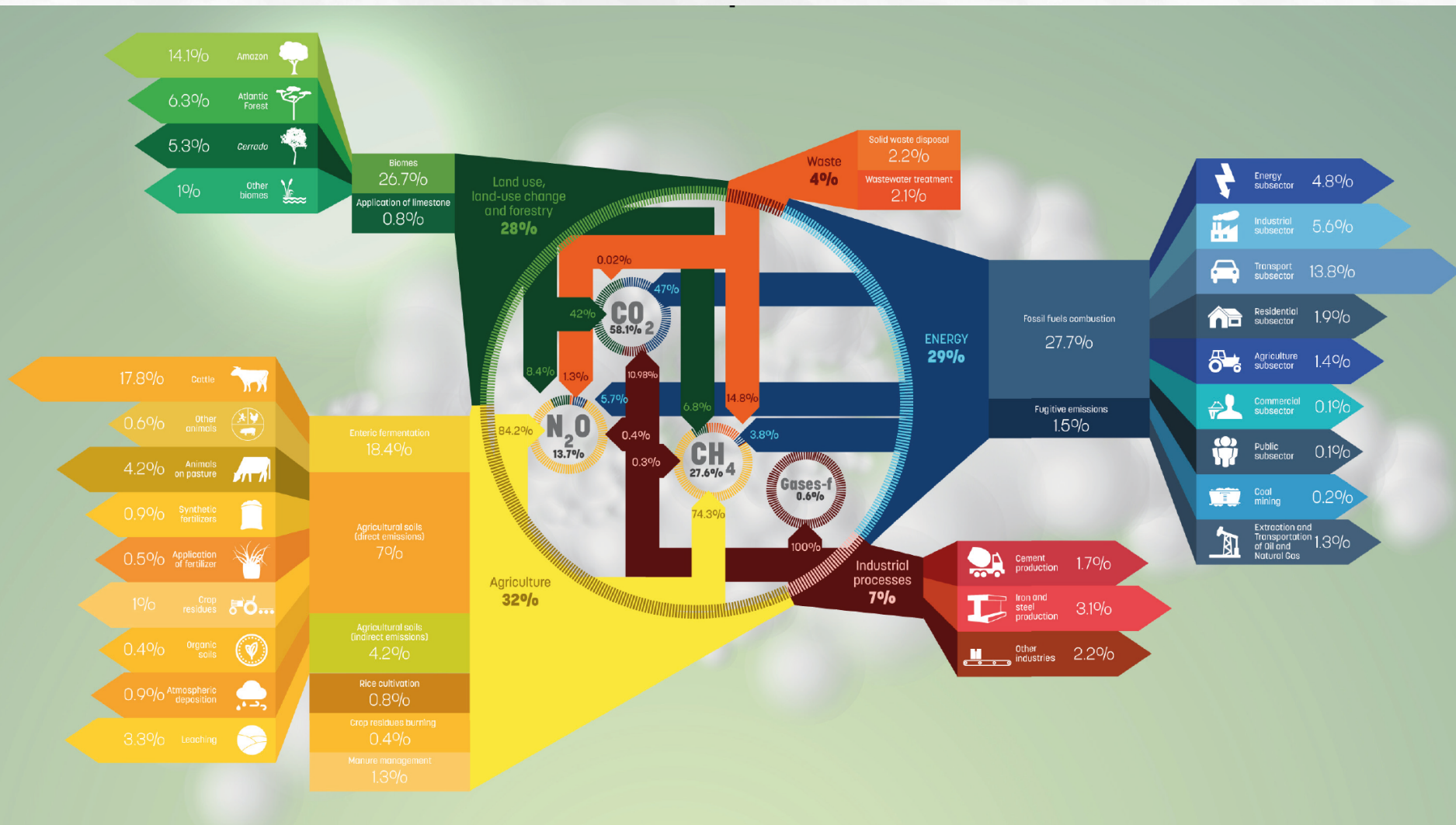
Figura II – Emissões brutas de gases de efeito estufa no Brasil, por setor, de 1990 a 2014 (Tg = milhões de toneladas).

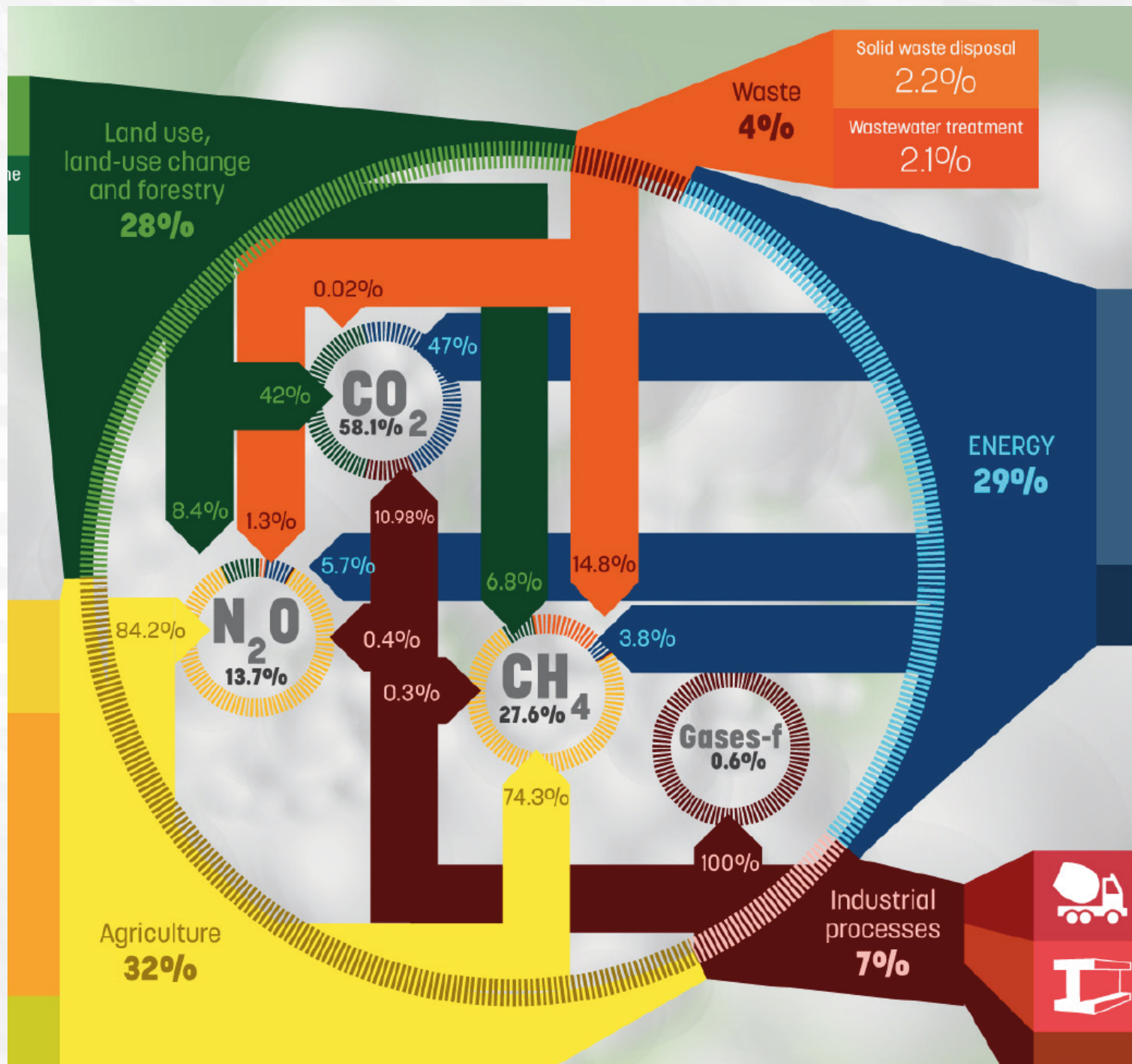
FIGURE I

Evolution of CO₂e emissions by different metrics, 1990 to 2010

Brazilian Total Emissions







Process option:

- ▶ Use detailed census data of 2006;
- ▶ Typification of the Brazilian Cattle-raising Municipalities;
- ▶ Tier 2 and/or local EF;
- ▶ This will cover 87% of the beef cattle population;

- ▶ Doubts?
- ▶ How to recalculate previous years?
- ▶ Will UNFCCC accept it?
- ▶ How much of the NDCs is covered?

Tipificação de Municípios Produtivos de Bovinos no Brasil

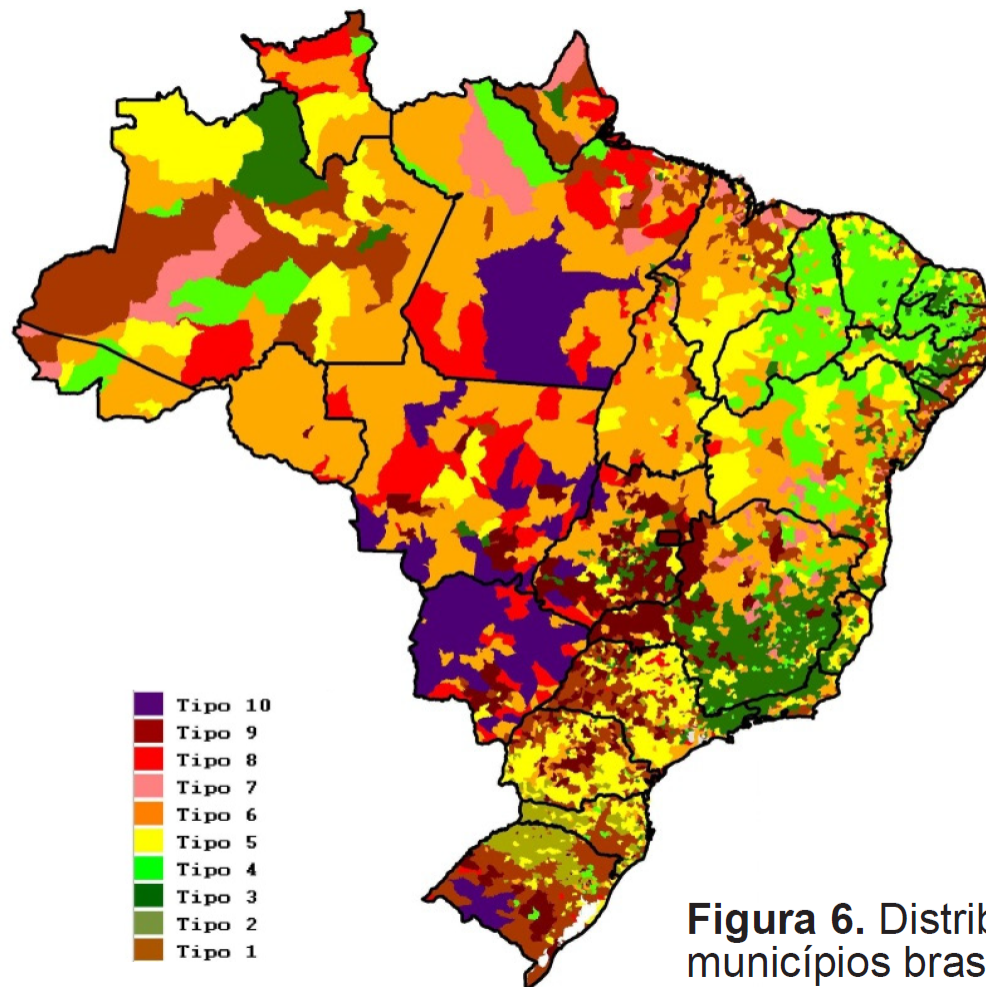


Figura 6. Distribuição dos municípios brasileiros

**II SIGEE – Second International
Symposium on Greenhouse Gases in
Agriculture – Proceedings**



**II Simpósio Internacional
sobre Gases de Efeito Estufa na Agropecuária
- II SIGEE -**

*II International Symposium on Greenhouse
Gases in Agriculture*

Emission factors:
IPCC Tier 2 + Local EF
PECUS Network
II SIGEE - 506 pg

Gap: Correlated
activity data

GRA:

- ▶ Share experiences in LA countries;
- ▶ Focus on NDCs related to livestock;
- ▶ Harmonize National Communications;
- ▶ Sensibility to capture mitigation strategies?



Thank you

alexandre.berndt@embrapa.br



MINISTÉRIO DA
AGRICULTURA, PECUÁRIA
E ABASTECIMENTO

