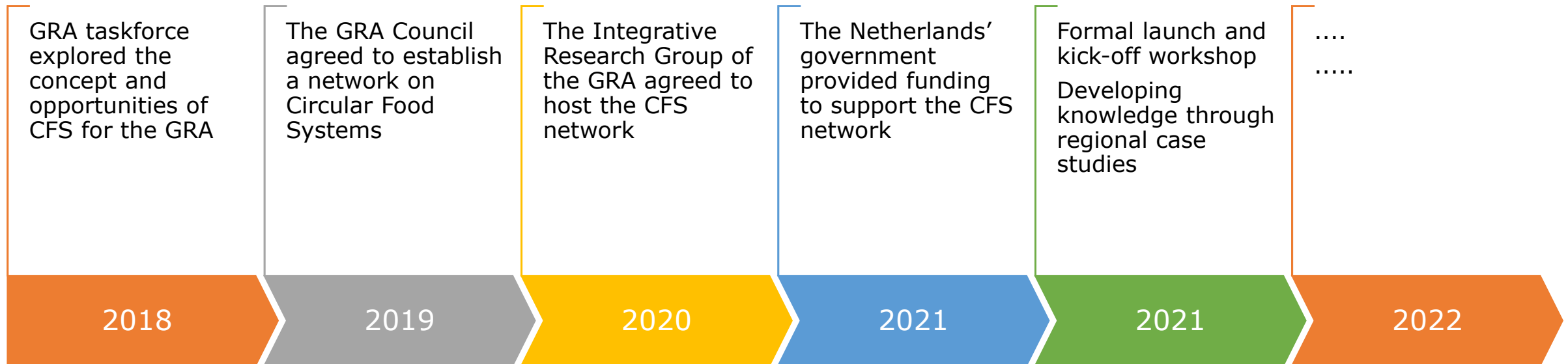




# **Circular Food Systems network**

GRA-IRG Annual Meeting  
June 24/25, 2021

# The Circular Food Systems Network – a short history...



# Objective CFS Network



The objective of the CFS network is formulated as:

***To contribute to food security with mitigation of GHG emissions by circularity across the entire agri-food system***

We do that by:

- Bringing together, developing, and disseminating knowledge about circular food systems;
- Mobilising agricultural scientists to explore circularity within different agricultural systems focussing on GHG emissions
- Providing policy makers with methodologies and system designs for a climate-smart, circular food system



# This week's kick-off meeting

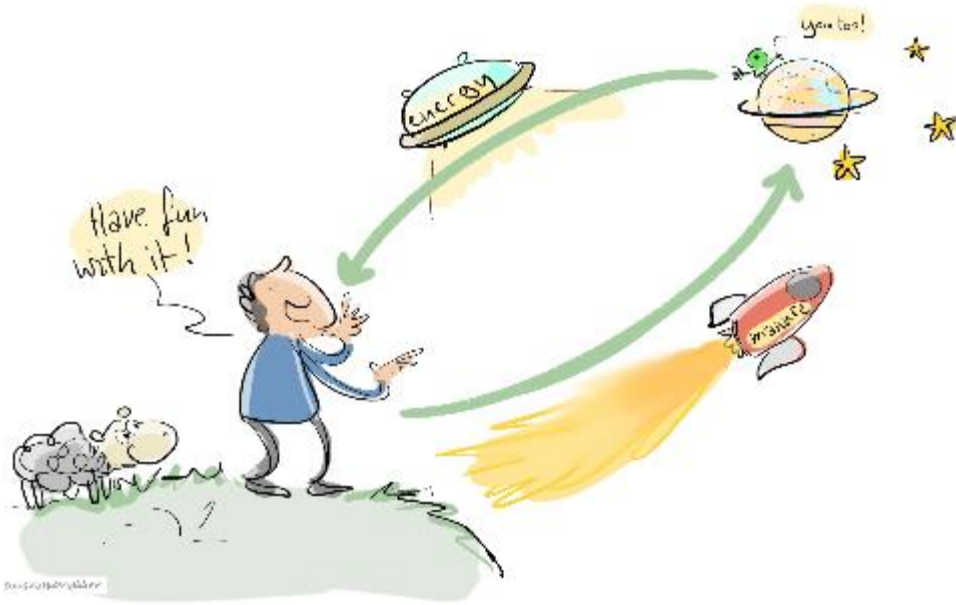
- Over 50 participants from 5 continents
- Presentations on regional views on CFS
- Mainly researchers with a wide variety of expertise
- 2/3 not (yet!) active in the GRA
  
- Participants looking for collaboration and connecting with other researchers to share knowledge



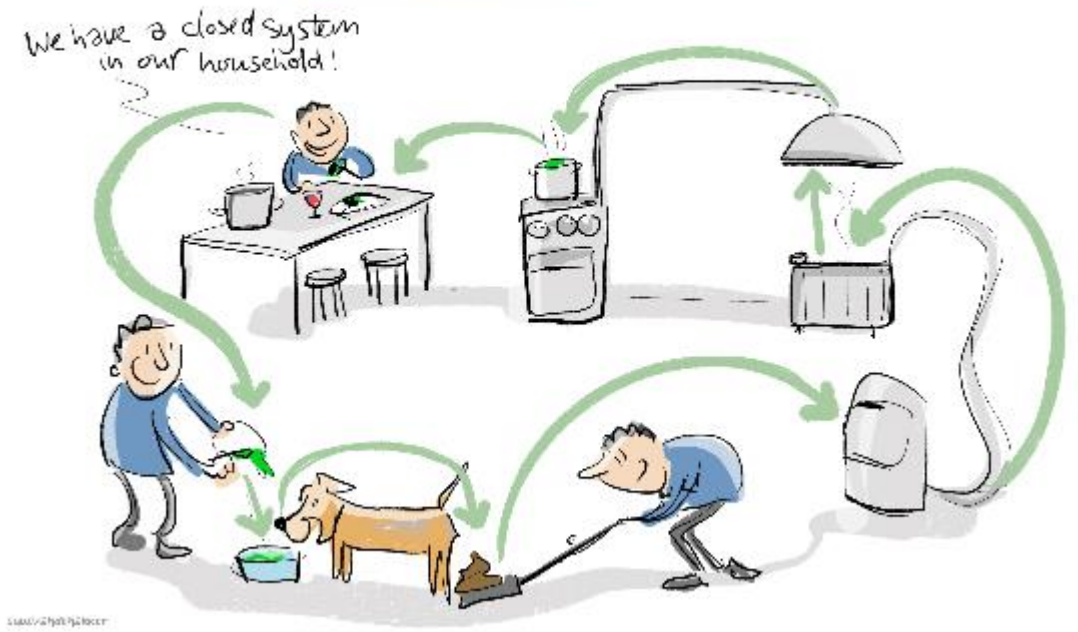
# Workshop discussion:

Circular Food Systems (ideally) have a regional scope

Circularity on which level?



Circularity on which level?



# Focus points for improving circularity in food systems:

- Resource-use efficiency
- Minimise nutrient losses (including food waste)
- Re-use unavoidable waste streams, i.e. for animal feed and soil improvement

feed food competition



Feeding livestock with by-products





# Put agricultural production / CFS in wider context

- Not only about GHG mitigation.
- Other co-benefits of CFS are (equally) important:
  - Climate adaptation & resilience
  - Income and jobs
  - Food security, nutrition security
  - Health
  - Biodiversity and nature
- Knowledge gaps tend to focus on technical issues. Socio-economic and organisational aspects of a CFS also important.
- We need to find a good indicator or set of indicators for circularity to measure impact/effect



# Focus points for the network

## What should the CFS Network focus on?



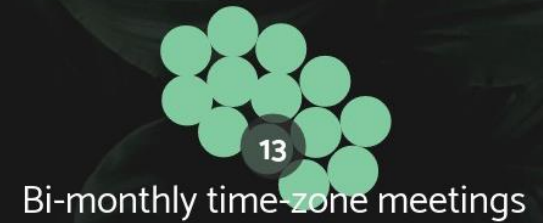
## What would you like to bring to the network?





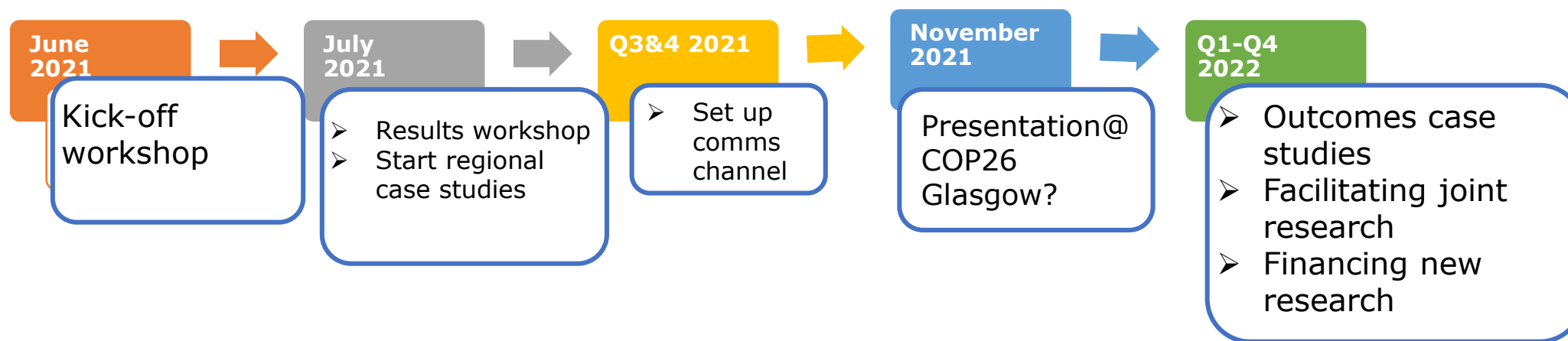
# How should we as a network stay in contact?

Mentimeter



# Workshop outcomes and timeline

- 9-10 new collaborations – regional and thematic case studies on CFS to be funded by the network



# Needs & request



Establish linkages with other networks:

Paddy rice group; inventories & NDC support; crop-livestock; agroforestry



Harmonising approaches and methods in case studies as much as possible in collaboration with other network's work



Communication / uptake of case study results, policy briefs



Exchange of students/researchers?



CFS



**Thank you**

Contact:

[cfsnetwork@wur.nl](mailto:cfsnetwork@wur.nl)

[Karin.Andeweg@wur.nl](mailto:Karin.Andeweg@wur.nl)