



GLOBAL RESEARCH ALLIANCE

ON AGRICULTURAL GREENHOUSE GASES

Dr Harry Clark - GRA Special Representative



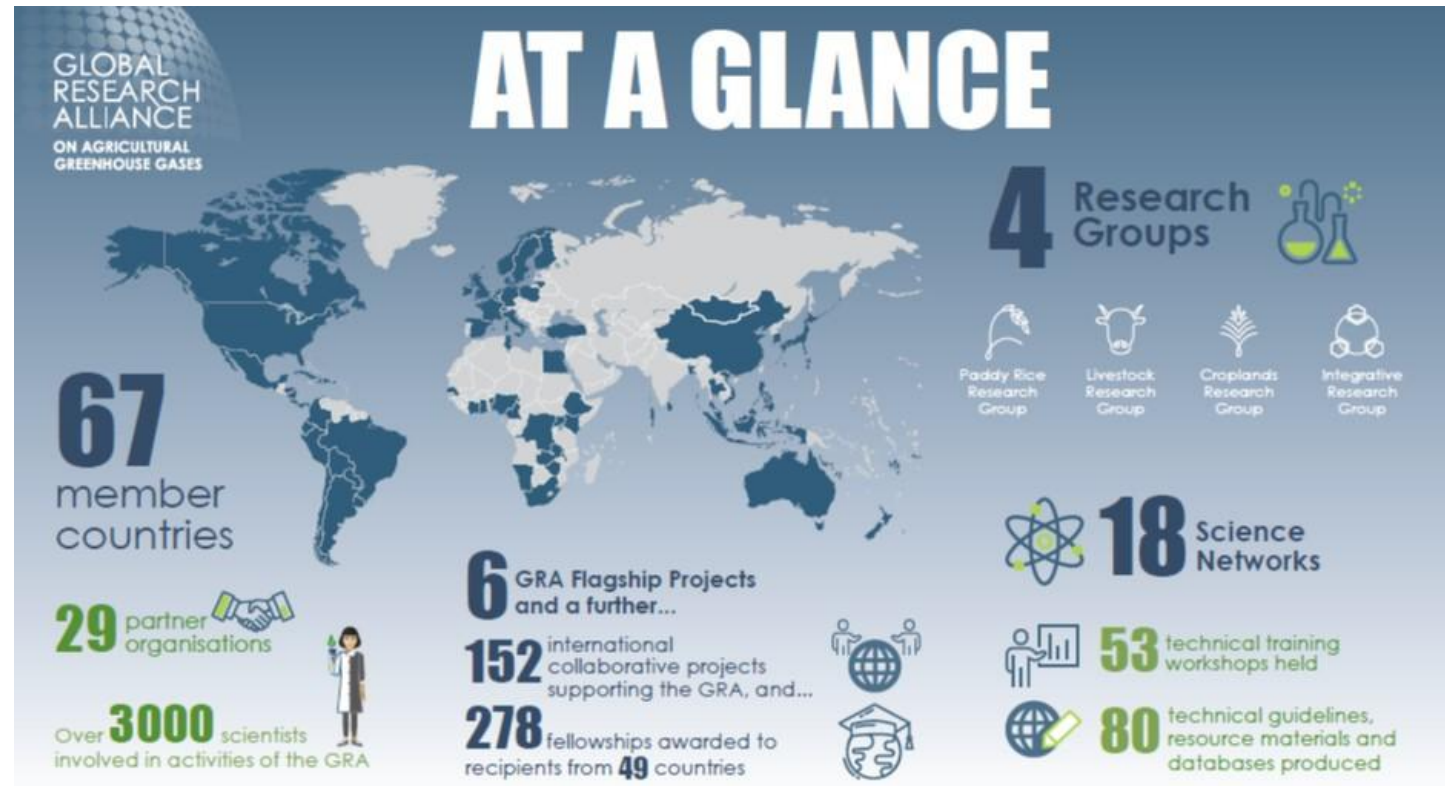
GRA Secretariat Updates

**Livestock Research Group Meeting, September 2023,
Lyon, France**

GRA at glance

GLOBAL
RESEARCH
ALLIANCE

ON AGRICULTURAL GREENHOUSE GASES



globalresearchalliance.org

@GRA_GHG

April 2023

GRA Partners and Members

GLOBAL
RESEARCH
ALLIANCE

ON AGRICULTURAL GREENHOUSE GASES



2023 GRA Council Meeting update

GLOBAL
RESEARCH
ALLIANCE

ON AGRICULTURAL GREENHOUSE GASES

- Spain Current Chair, South Africa Vice-Chair (will host 2024 Council meeting)
 - Establishment of a working group on Science to Policy
 - Research stocktake to be presented at COP28
 - Research Groups to consider the creation of regional groups/networks
 - Reformat of the Council Meeting to ensure the participation of all members
 - Flagship on Agroecology and Agroforestry endorsed by the Council
-
- Flagship projects key mechanism for demonstrating benefits of the GRA
 - Important to highlight links to adaptation co-benefits in the proposal template for GRA Flagships and the reports provided by Research Groups to the Council.
 - Including reference to training and capability building opportunities (e.g workshops or fellowships) in the proposal template for GRA Flagships

GRA Special Representative - Team approach

GLOBAL
RESEARCH
ALLIANCE

ON AGRICULTURAL GREENHOUSE GASES

- Special Representative is now a part time position
- Developing a team approach – workload & succession
- Aiming to provide greater support on a regional basis
- Work plan for current year still under development

Enhanced GRA Secretariat

★ New addition

Ireland:

- Lungile Sissoka

Senegal:

- Segu Ndao

★ New addition

Uruguay:

- Nicolas Costa

Germany:

- Nina Grassnick

★ New addition

Special
Representative:
Dr Harry Clark

New Zealand:

- Chista Keramati ★
- Deborah Knox
- Heather Went
- Jo Monjol
- Shiloh Babbington



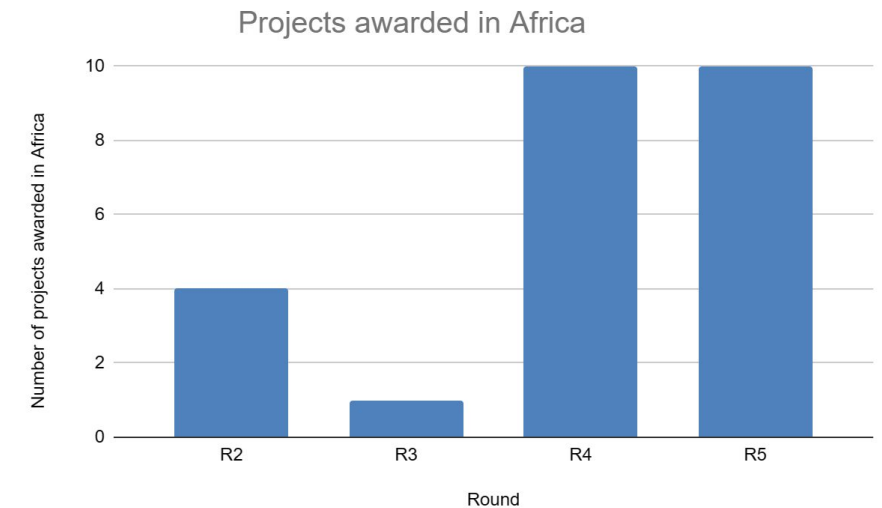
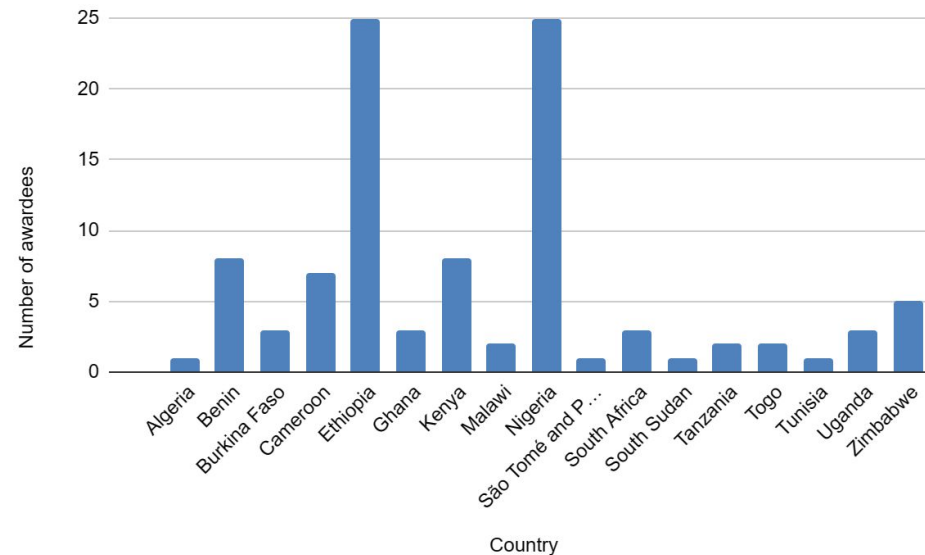
CLIFF-GRADS Programme

- Round 6 closed closed on 28 August 2023.
- Received XX applications from XX countries.
 - Awardees will be announced at COP28
 - Preparing a side event with CGIAR during COP28
- Thanks to:
 - The New Zealand Government for financial support
 - Mitigate+ for their engagement and financial support
 - University of Galway for the administration of the programme



CLIFF-GRADS Programme

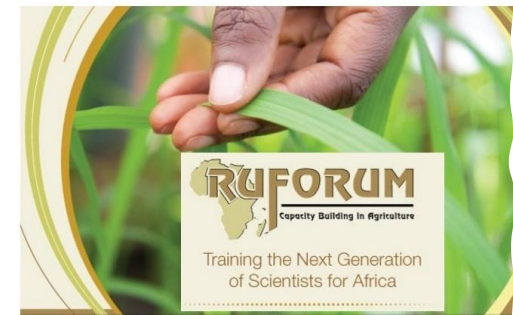
- The Climate, Food and Farming, Global Research Alliance Development Scholarships Programme (CLIFF-GRADS) is a joint initiative of the **GRA & Mitigate+**: **Research for Low Emissions Food Systems**
- **176 PhD students** have received awards since 2017



RUFORUM GRA Graduate Research Grants

Aim: to build the capability of graduate students and post-graduate scientists in Africa to conduct applied research on agricultural GHGs

- 2020: R1 supported **8 projects**, involving **22 Masters students**
- 2022: R2 will support **8 research grants including Masters students** and **2 PhD research grants**
 - R2 closed on 10 April 2023 and selected projects will be announced at the end of October.
 - 57 applications received for Graduate Research Grants & 24 for Doctoral Grants
- The R2 PhD projects are part of a joint research initiative between GRA, RUFORUM and ILRI's Mazingira Centre



Flagship Projects

- Only one mechanism for project development
- Specific attributes
- Formal 'endorsement' process
- Not every project suitable for the flagship label
- Benefits under evaluation

Flagship Projects Outlines

FLAGSHIP CRITERIA

SCOPE - defined timeline and outcome of global applicability

PARTICIPATION - wide GRA member involvement/range of opportunities to collaborate (e.g data, sample, knowledge sharing...); and identify capability building activities (PhDs, Post-docs, CLIFF-GRADS, workshops...), encourage collaboration between networks.

RESEARCH - generate new knowledge using an identified community of experts within the GRA membership.

RESOURCING - Identified project lead, min 30% of funding confirmed for the project. Proposed funding mechanisms for additional activities and contribution identified.

FORMAL FLAGSHIP APPROVAL PROCESS

- Flagship project template to be completed by the project and to be sent to the GRA Secretariat **min 6 months** before the Council Meeting
- The GRA Flagship project must identify at least **five Council Champions**, Members and Partners, consisting of at least three Country members.
- Council Representative to assess proposed Flagship project using the criteria, and agree on the Flagship projects to endorse.
- GRA Flagship projects will be profiled on the GRA website, and once complete will be presented to Council.
- Development mechanism more important than formal approval

Current Flagship projects

GLOBAL
RESEARCH
ALLIANCE

ON AGRICULTURAL GREENHOUSE GASES



Some considerations

GRA not a funder – are there clearly identifiable funding opportunities?

Flagship projects need to provide a point of difference – success dependent upon broad collaboration

Focussed – projects not programmes

Realistic – timeframe, volume of work, resources needed etc

Committed & identified leaders

Quality vs quantity; focus and prioritisation

				benefits	collaboration essential for success	identified	
EF estimation in Bangladesh	Emission Factor estimation from the production stage based livestock population for methane estimation of Bangladesh."	Yes	N.I.	No	No	No	No
Cameroon	General mitigation and capacity building in Africa	Yes	2	?	?	No	No
NoMaMaS	Literature review of new and emerging MM technologies	Yes	N.I.	yes	No	Yes	No
CH4 proxy	Faecal near-infrared spectra as proxy of enteric methane emissions in cattle	Yes	N.I.	Yes	Yes	Yes	Yes
INRAE Flagship	Dataman gap filling	Yes	N.I.	Yes	Yes	Yes	No
Global ruminant genetic database	Same as title	Yes	N.I.	?	?	No	No
Rapid non-invasive identification of low methane emitting cattle	Development of proxy measures for use in low emitting livestock breeding programmes	Yes	3	Yes	Yes	Yes	Yes
Meeting climate commitments through improving animal health	Facilitate dialogues among various stakeholders to source and maintain data, tools, models, and develop methods and guidelines, capacity development and eventually implementation.	Yes	N.I.	Yes	Yes	No	No
Climate-Smart Beef Production Systems to Mitigate Global Warming	Identify heat tolerant indigenous cattle breeds for pastoralist in Africa, identify genetic markers for reduced methane excretion, develop indigenous nutritive herbage to sustain livestock in arid area's, with an emphasis on CO2 sequestration in soils.	Partly	3	?	?	Yes	No
Improving Methane Emissions Estimates from Manure	Select within breeds genetic markers for reduced methane excretion without performance compromises.	Yes	N.I.	Yes	Yes	Yes	No

Thank you!

cliffgrads@globalresearchalliance.org

secretariat@globalresearchalliance.org

@GRA_GHG (Twitter)

Global Research Alliance on Agricultural Greenhouse Gases (Linked In)