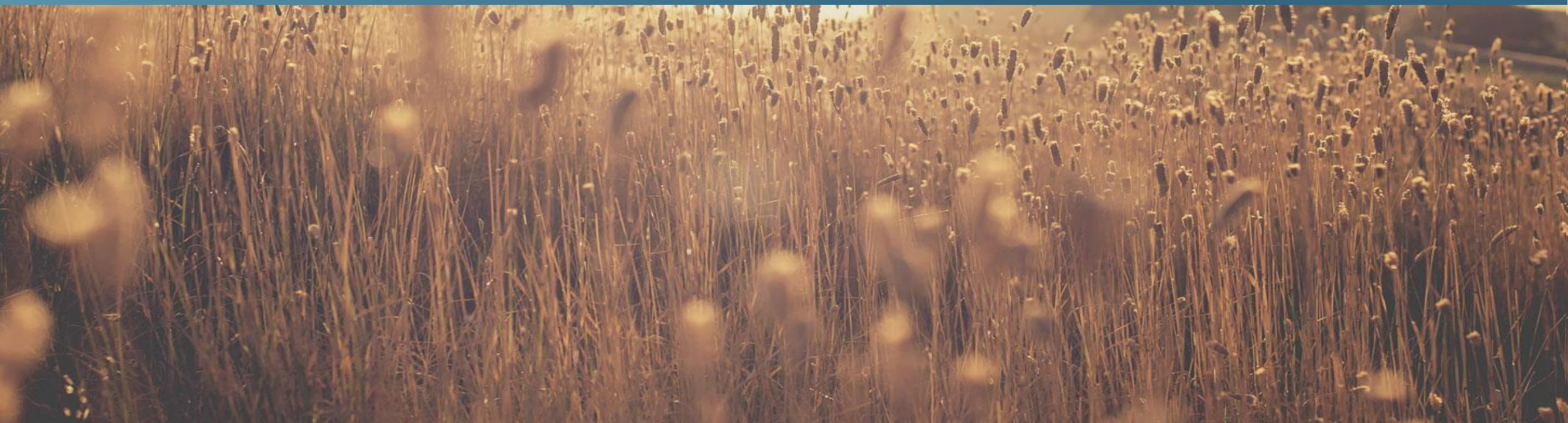


GLOBAL
RESEARCH
ALLIANCE

ON AGRICULTURAL GREENHOUSE GASES

Cross-Cutting Topics Working Group Recommendations



Cross-Cutting WG Report

GLOBAL
RESEARCH
ALLIANCE

ON AGRICULTURAL GREENHOUSE GASES

Background:

Feedback on the Integrative Research Group from the Review Group:

- IRG co-Chairs struggling to align with all the networks.
- Definite scope creep in the IRG
- IRG was most successful when had funded projects.

Recommendations from the Review Group presented at the 2025 Council Meeting:

- Landscape Management and Farm to Regional Scale Networks to be merged —> Farm System Network
- Inventories and NDC Network and Indigenous Research Network to report directly to the Special Representative
- Consider the need of a cross-cutting group.

Cross-Cutting WG Report

Recommendations:

1. Support the Establishment of the Crop and Land Use RG:
 - Allow time for the new Crop & Land Use Research Group (RG) and Networks to establish.
 - Review the need for a separate cross-cutting group in 1-2 years.
2. Assess Structural Gaps
 - New Co-Chairs to develop a RG work plan and identify any research gaps aligned with the GRA Mission & Strategy (2026–2030).
3. Propose Solutions
 - Where gaps are identified, Council to review proposals that address this (e.g. project, Flagship, Network)
4. Enhance Collaboration
 - The Livestock RG and Crop & Land Use RG should meet biannually.
 - Council to support cross-cutting collaboration between RGs.